



# TALBOT VILLAGE

COMMONS

THE TOWNS

ATTENTIVE **DESIGN** FOR EFFORTLESS LIVING

ATTENTIVE **DESIGN** FOR  
EFFORTLESS LIVING

## THE *DEVELOPMENT*

Tucked away and nestled into greenspace, The Towns are conveniently located in Talbot Village Commons, with access to an array of amenities for easy, everyday living. Settle into functional living spaces that are modern and inviting. The heart of the home features an open concept main floor space to live and entertain. The second floor offers three spacious bedrooms, perfect for a growing family or busy professionals, with the option for an added bedroom or home office on the lower level.

## A CITY AT YOUR CONVENIENCE

The Forest City offers many conveniences for living and working in and around London. Mere steps from a myriad of retail and dining options, numerous parks and greenspaces, with ample recreation and entertainment facilities, The Towns at Talbot Village Commons are close to the heart of it all.

With all that London has to offer, including: three state-of-the-art healthcare facilities, educational institutions and access to the HWY 401 and HWY 402 in mere minutes, The Towns are ideal for business professionals and growing families.

If you are opting for sustainable travel, London offers a wide range of transit options for commuting by bus, train or air.



# TALBOT VILLAGE

COMMONS

THE TOWNS



799 Southdale Road West, London Ontario  
[southsidegroup.ca](http://southsidegroup.ca)

AT THE **HEART** OF IT ALL



FOR CITY DWELLERS  
& ACTIVE FAMILIES



## 3-STOREY, 4-BEDROOM MODERN TOWNHOMES

TRADITIONAL DESIGN WITH MODERN FLAIR

OPEN CONCEPT LIVING SPACE

MAIN FLOOR POWDER ROOM

3 + 1 BEDROOM, 4 BATH

MODERN KITCHEN WITH ISLAND WORKSPACE  
AND QUARTZ COUNTERTOPS

FULL SIZE, MODERN APPLIANCES

LARGE MASTER WITH ENSUITE AND  
WALK-IN CLOSET

SECOND FLOOR LAUNDRY

FINISHED BASEMENT WITH 2PC BATHROOM

CARPETED BASEMENT SPACE FOR WARMTH

BASEMENT WALKOUTS (SELECT UNITS)

PATIO DOORS TO PRIVATE OUTDOOR SPACE

ATTACHED SINGLE CAR GARAGE

WINDOW COVERINGS INCLUDED

GROUNDS MAINTENANCE / SNOW REMOVAL

QUIET STREET

# THE *TOWNS*

Traditional in design, yet modern in convenience. With plenty of room for living, the neutral, modern interiors create welcoming spaces. Catch up at the kitchen island after a day at the office or on your private back deck to watch the sun slip away for the evening. Featuring 4 generous bedrooms and 4 modern bathrooms, The Towns are a nod to sophistication and modern comfort. With room to relax or grow, your sanctuary is available for rent at The Towns at Talbot Village Commons.

## DISCOVER YOUR SANCTUARY CONVENIENTLY CLOSE TO:

RECREATION FACILITIES

RETAIL AND DINING

GREENSPACES AND PARKS

WALKING AND CYCLING TRAILS

COMMUNITY CENTRES

FITNESS AND WELLNESS FACILITIES

SCHOOLS

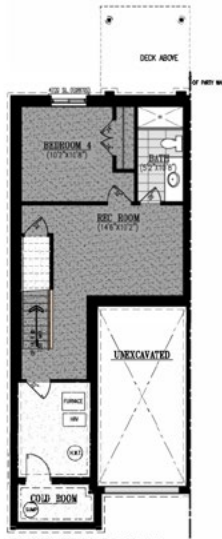
SWIFT ACCESS TO 401/402 HIGHWAYS

TRANSIT ROUTES





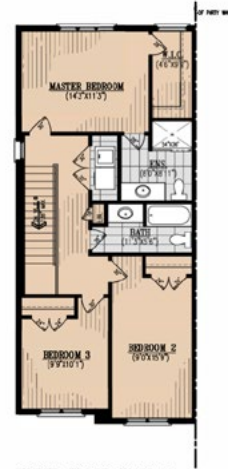
FRONT ELEVATION



FOUNDATION PLAN A1  
637 SQ. FT. FINISHED



MAIN FLOOR PLAN A1  
630 SQ. FT. (1497 SQ.FT. TOTAL)



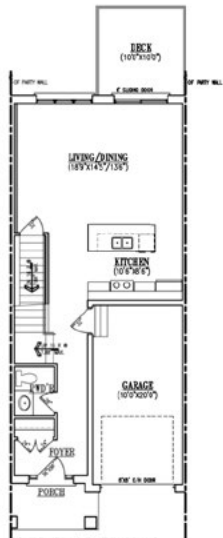
UPPER FLOOR PLAN A1  
656 SQ. FT.



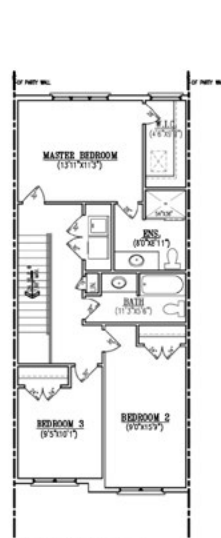
FRONT ELEVATION



FOUNDATION PLAN A3  
634 SQ. FT. FINISHED



MAIN FLOOR PLAN A3  
638 SQ. FT. (1497 SQ.FT. TOTAL)

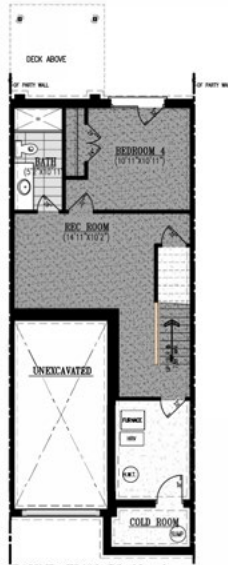


UPPER FLOOR PLAN A3  
656 SQ. FT.

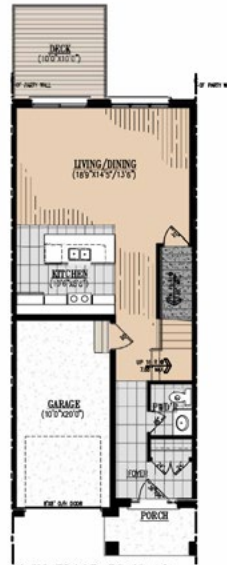




FRONT ELEVATION



FOUNDATION PLAN A2  
455 SQ. FT. FINISHED



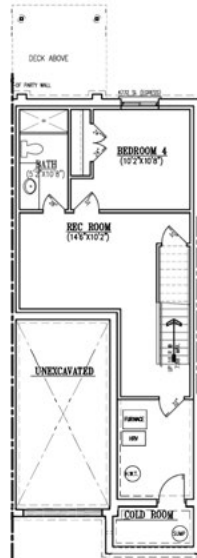
MAIN FLOOR PLAN A2  
638 SQ. FT. (1497 SQ.FT. TOTAL)



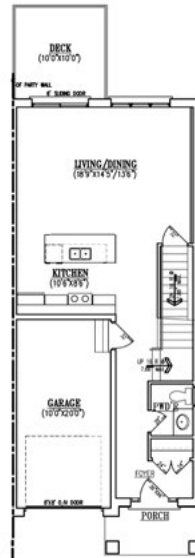
UPPER FLOOR PLAN A2  
856 SQ. FT.



FRONT ELEVATION



FOUNDATION PLAN A4  
437 SQ. FT. FINISHED



MAIN FLOOR PLAN A4  
638 SQ. FT. (1497 SQ.FT. TOTAL)



UPPER FLOOR PLAN A4  
856 SQ. FT.

*A SENSE OF QUIET LUXURY*  
GREET'S EACH UNIT FOR A UNIQUE RESIDENTIAL EXPERIENCE



## 799 SOUTHDALE ROAD WEST

For more information or to preview the The Towns at 799 Southdale Rd. W., contact our Southside Group Sales Team:



75 Blackfriars St, London, ON  
(519) 433-0634  
[kgiberson@southsidegroup.ca](mailto:kgiberson@southsidegroup.ca)



### ABOUT THE BUILDER

Since 1979, Southside Group has had a vision to meet and exceed client expectations through a steadfast commitment to excellence in both quality development/construction and customer service. With a proven track record that spans over 40 years, the company has evolved to become one of the most distinguished, major developers and general contractors.

