

KEY PLAN NTS

DRAFT PLAN OF SUBDIVISION

PART OF LOT 8
CONCESSION 11
ALL OF PIN 00025-0875
GEOGRAPHIC TOWNSHIP OF DEREHAM
MUNICIPALITY OF THE
TOWN OF TILLSONBURG
COUNTY OF OXFORD

OWNER'S AUTHORIZATION
WE HEREBY SUBMIT THIS DRAFT PLAN OF SUBDIVISION
WE HAVE THE AUTHORITY TO BIND THE CORPORATION.

SOUTHSIDE CONSTRUCTION MANAGEMENT LIMITED DATE

SURVEYOR'S CERTIFICATE
I HEREBY CERTIFY THAT THE BOUNDARIES OF THE LAND TO BE SUBDIVIDED, AS SHOWN ON THIS PLAN, AND THEIR RELATIONSHIP TO THE ADJACENT LANDS ARE ACCURATELY AND CORRECTLY SHOWN.

Kim Husted
KIM HUSTED OLS. DATE: August 30/2020
KIM HUSTED SURVEYING LTD.

REQUIREMENTS UNDER SECTION 51(17) OF THE PLANNING ACT
A: AS SHOWN ON PLAN
B: AS SHOWN ON PLAN
C: AS SHOWN ON KEY PLAN
D: LOW AND MEDIUM DENSITY RESIDENTIAL
E: AS SHOWN ON PLAN
F: AS SHOWN ON PLAN
G: AS SHOWN ON PLAN
H: MUNICIPAL WATER
I: SAND LOAM
J: AS SHOWN ON PLAN
K: FULL SERVICES
L: AS SHOWN ON PLAN

LAND USE SCHEDULE

LAND USE	AREA IN HECTARES	%
LOW DENSITY RESIDENTIAL LOTS 1 THROUGH 107	7.101	52.8%
MEDIUM DENSITY RESIDENTIAL BLOCKS 200 & 201	1.810	13.5%
STORMWATER MANAGEMENT FACILITY BLOCK 202 & 203	0.827	6.1%
PARKLAND BLOCKS 204	0.991	7.4%
ROAD WIDENING BLOCK 205 & 206	0.120	0.9%
RIGHT OF WAYS (STREETS A, B, C & D)	2.595	19.3%
TOTAL AREA	13.444	100.0%

London Office
41 Adelaide St. N., Unit 71
(519) 672-8310

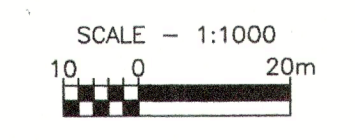
Paris Office
31 Mechanic St., Unit 301
(519) 442-1441

development engineering
(London) Limited
CONSULTING CIVIL ENGINEERS

No	REVISIONS	DATE
1	DRAFT PLAN APPLICATION	

WESTWINDS

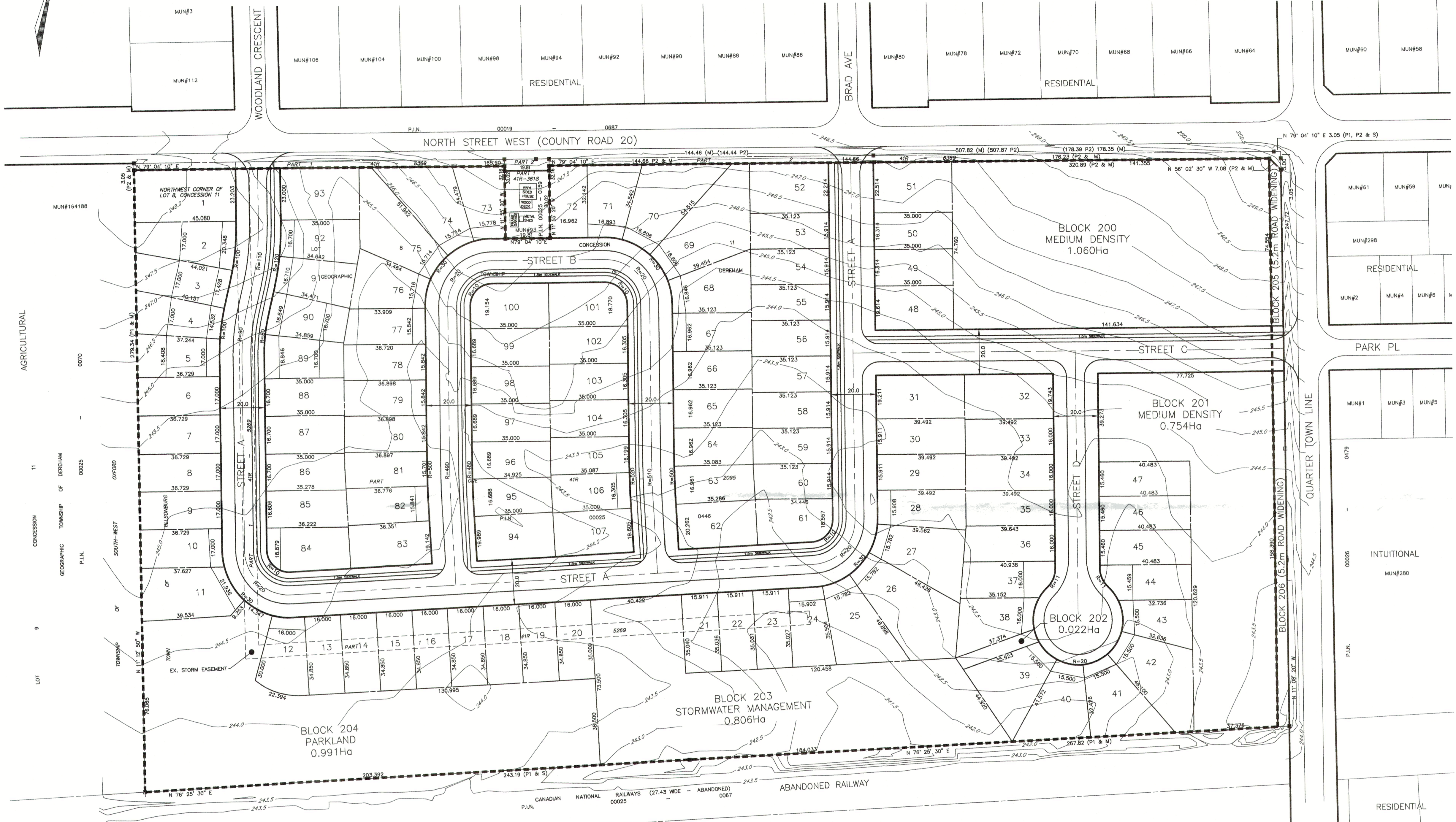
SOUTHSIDE CONSTRUCTION
MANAGEMENT LIMITED



PROJECT No.
DEL20-005

SHEET No.
DP

PLAN FILE No.



June Aug 20 2020 9:23am DEL20-005 - Draft Plan m31.dwg